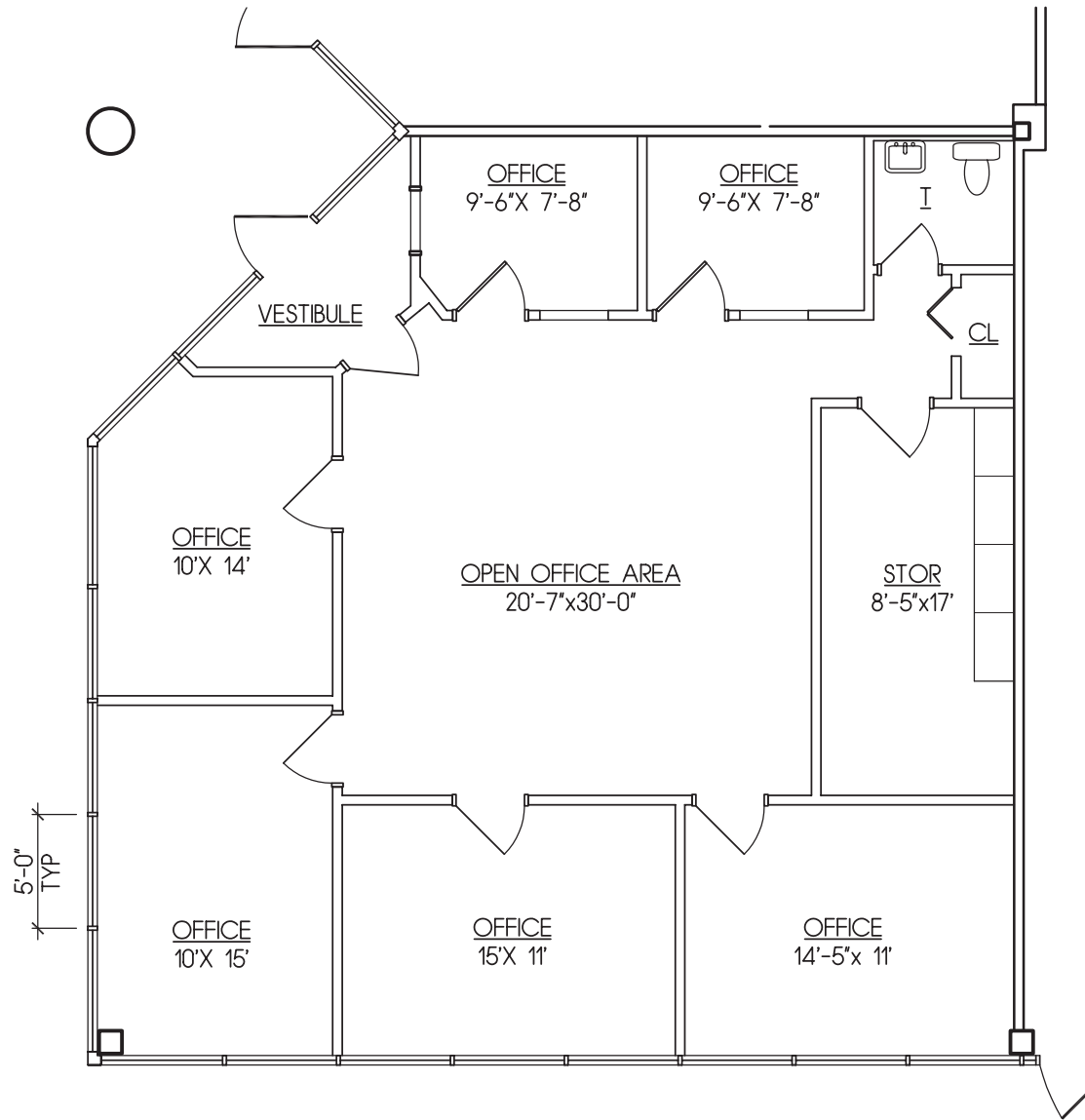


# REGENT STREET OFFICE PARK

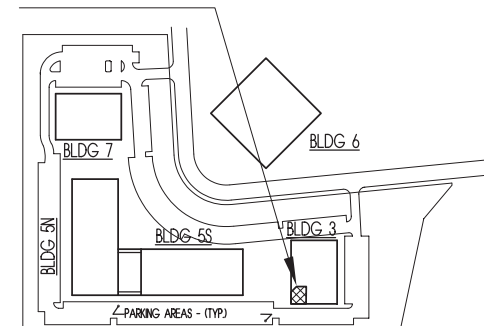
REGENT STREET  
LIVINGSTON, NEW JERSEY  
1,697 RENTABLE SF



## FLOOR PLAN SUITE 304

SCALE: 1/8" = 1'-0"

### SUITE LOCATION



### KEY PLAN

N.T.S.

project north



651 WEST MOUNT PLEASANT AVENUE  
LIVINGSTON, NJ 07039-1667  
T: (973) 992-7727  
F: (973) 992-3084  
WWW.EASTMANCOMPANIES.COM

FOR MORE INFORMATION, PLEASE CONTACT  
ERIC J. MAURER, DIRECTOR OF LEASING  
T: (973) 488-6110  
F: (973) 992-3084  
E: ERICM@EASTMANCOMPANIES.COM