

REGENT PARK

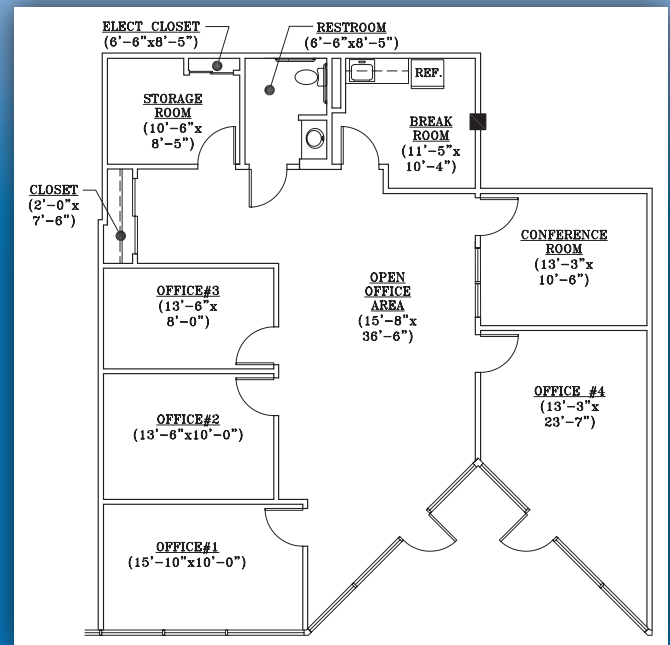
7 REGENT STREET • LIVINGSTON, NJ

1,910 square feet available

- 1,910 square feet available - Suite 708
- Full-service cafe
- Day care on-site
- Minimal loss factor of 1%
- Campus-like setting
- Immediate access to I-280 and Route 10
- Tenant-controlled HVAC



VIEW THE FULL PROPERTY AT WWW.REGENTPARKNJ.COM



No warranty or representation / subject to errors or omissions.



For more information, please contact:
Eric J. Maurer, Director of Leasing
V: (973) 488-6110 • F: (973) 992-3084

ericm@eastmancompanies.com
www.eastmancompanies.com



SUITE#: 708

REGENT PARK
7 REGENT STREET.
LIVINGSTON, NEW JERSEY

1,910 RENTABLE SQ. FT.

